



Southern Shield

Good/ Best Practice feedback

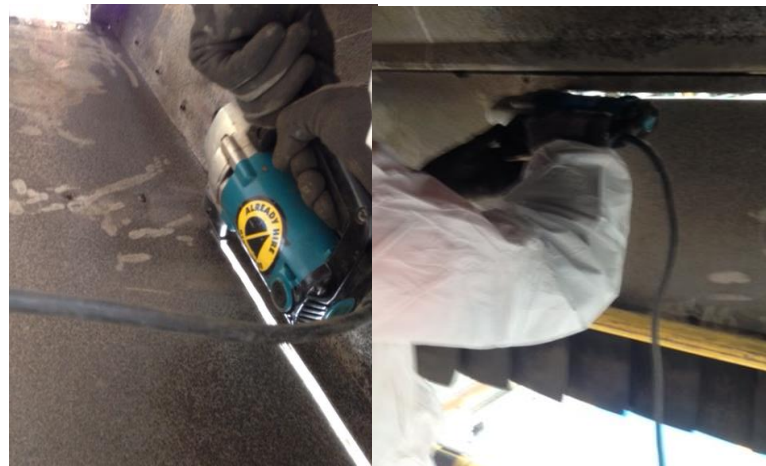
Nature of works

Removal of fan cowlings

Date of good practice note

June 2017

Panel Nibbler



Description of the good practice

When removing the redundant fan cowlings using the recip saw, there were complaints from the depot staff about the amount of noise the task was creating. A panel nibbler was hired to be used for the remainder of the fan cowlings making the task a lot easier and greatly reducing the noise.

What are the benefits?

- Significantly reduced noise, no further complaints were received.
- Reduced the HAVs exposure compared to the recip saw, making the task easier and safer for the operatives.
- Removed the issue of recip blades snapping throughout the task.
- Fingers cannot come into contact with cutter, eliminates the risk of injuries from the blade.
- Waste produced is larger metal clippings rather than fine filings, making easier to clean up.

Are there any drawbacks?

The Panel Nibbler is 110 volt rather than battery powered so a power source must be available, although smaller battery operated units are available for thinner sections.

Supporting information



NIBBLER 3.2MM

JN3201J

- Technical specifications
- User benefits
- Vibration
- Standard equipment
- Information & Technologies
- Health and Safety

Model JN3201 Nibbler is the aesthetic change model of current model JN3200 by using Motor housing of Angle grinder GA5010 series and Rubberized soft grip. Its Blade section is the same as Nibbler JN3200.

Addition to the above, it has the following advantages:

- 710W continuous rating input.
- Low noise level at 81 dB(A).

