



Southern Shield

Good/ Best Practice feedback

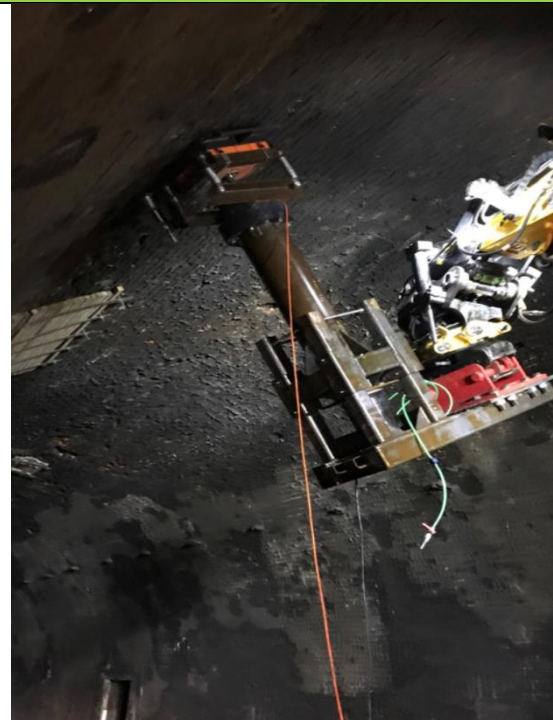
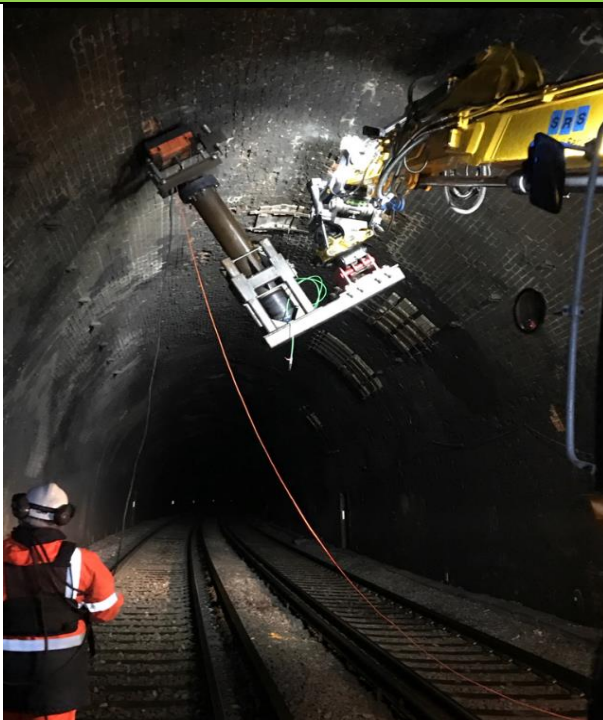
Nature of works

Tunnel inspection for voids

Date of good practice note

07/06/2018

GPR in Tunnels



Description of the good practice

To remove the use of scaffold towers and manual handling, a GPR (ground penetrating radar) unit was attached to an RRV, which then scanned across the tunnel looking for voids.

What are the benefits?

Use of the RRV eliminates both the need to work at height and manual handling of the GPR unit. Also, the process is much faster using the RRV than when working off towers, resulting in higher productivity levels.

Are there any drawbacks?

The use of an RRV does introduce more cost and a skilled operator is required to use the equipment.

Supporting Information

The works were undertaken by Osborne working in conjunction with SRS Services.