

Route to Gold



What is Construction Route to Gold?

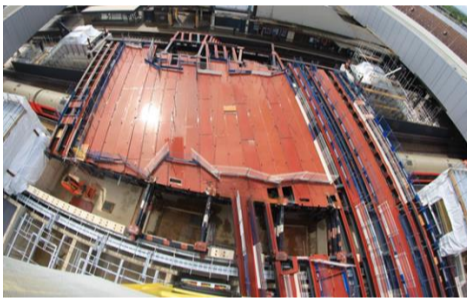
Route to Gold is a performance measurement initiative within the Southern region Capital Delivery supply chain. The initiative aims to promote collaborative working behaviours, reduce costs caused by re-work and embed a culture of continuous improvement within the rail industry.

Period 1's highest scoring site

Gatwick Station is the highest scoring site for Period 1 2022

The Gatwick Station Project is a vital upgrade to the Gatwick Airport Station to increase capacity, improve accessibility and transform the experience for more passengers than ever before.

The benefits will include



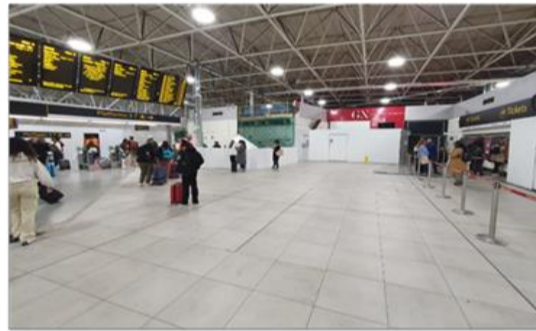
- Eight new escalators, five new lifts and four new stairways, which are being installed to support passengers with reduced mobility, the elderly and those travelling with a pushchair and/or luggage
- Platforms 5 & 6 are being widened to reduce crowding and improve accessibility
- A second concourse is being constructed to provide more space and better facilities for passengers
- Connections to the airport terminals and passenger wayfinding are being upgraded to improve the passenger experience

The widened platforms, new lifts, escalators and stairways will allow passengers to board and alight trains more quickly, trains will spend less time on platforms, reducing delays and supporting a more reliable network.

This means that the project will provide improved accessibility, train performance and a better journey experience.

Over the last period, the following works have taken place:

- Delivery of five of the eight escalators on platforms 5, 6 and 7
- Successful diversion of Gatwick negative return cables around the location of the new 1714 points.
- Continuation of back of house steelwork
- Concourse deck steelwork has commenced fabrication



The best of British (supporting sustainability)

The project and its supply chain partners support the UK economy in a number of ways, one being using British Steel for all the project's steelworks. These are being used to support the new second station concourse, for the new entrance to the airport from the rail station, the structure for the new back of house building and much more.

They are also working with steel fabricator Code Serve and steelwork surface treatment company Hi-Tech Steel Services. Construction Manager Derek Johnson recently visited the headquarters of both companies to look around the workshops and see first-hand the work that is being carried out. Derek said:

"I was impressed with the facilities and am pleased that we are able to support British manufacturers and fabricators in such difficult times."


Code Serve's fabrication workshop has the latest cutting and welding equipment, as well as a very large steel storage laydown area. The pandemic created a shortage in steel, so the steel for this project was pre-purchased from British Steel and is being stored at Code Serve until required.

The new bridge steelwork modules installed by Kilnbridge can be seen across platforms 6 and 7 and in the new back of house building.

Top scoring sites by Route are:		
Sussex	Gatwick Airport Station	Costain
Kent	Warrior Square	BAM Nuttall Limited
Wessex	Epsom Substation	Octavius Infrastructure Limited

If you would like a full score summary report for all Southern region Capital Delivery sites please contact: [Paul Burr](#).


GOLD SITES



Costain
Gatwick Airport station

BAM Nuttall
Balcombe Embankment
Hassocks Embankment
Bracewell Road
Embankment

SILVER SITES



BAM Nuttall
Eastbourne
Warrior Square
Oxted Viaduct
Bearsted
Thanet Parkway
Tunbridge Wells station
Queensborough FB
Herne Hill TP Hut

Octavius Infrastructure Ltd
Epsom Substation
Motspur Park TP Hut
Leatherhead Substation
Witley Upside
Embankment
Ashurst Substation
New Milton Substation
Sturt Land Substation